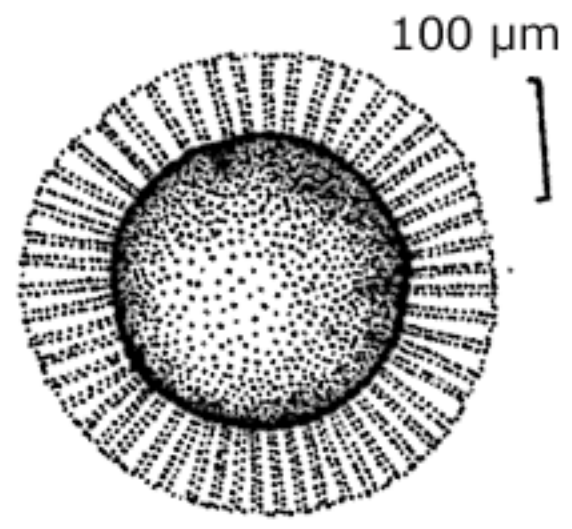
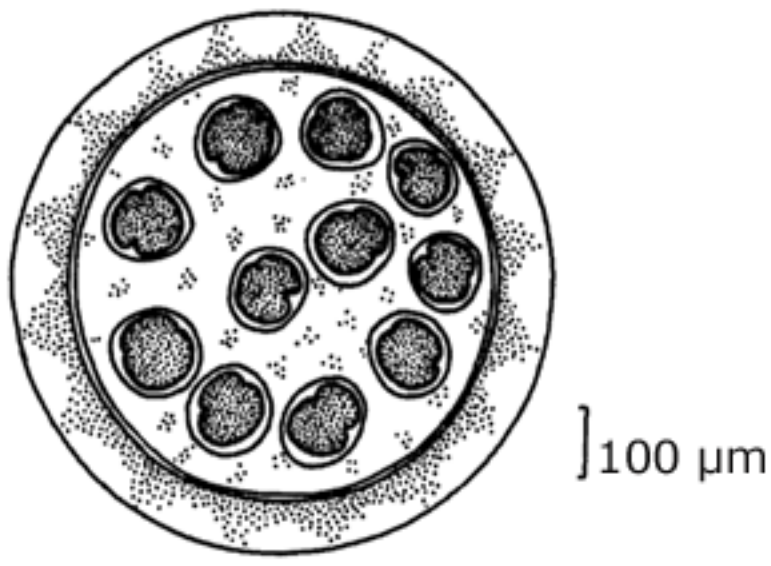


Phylum Mollusca

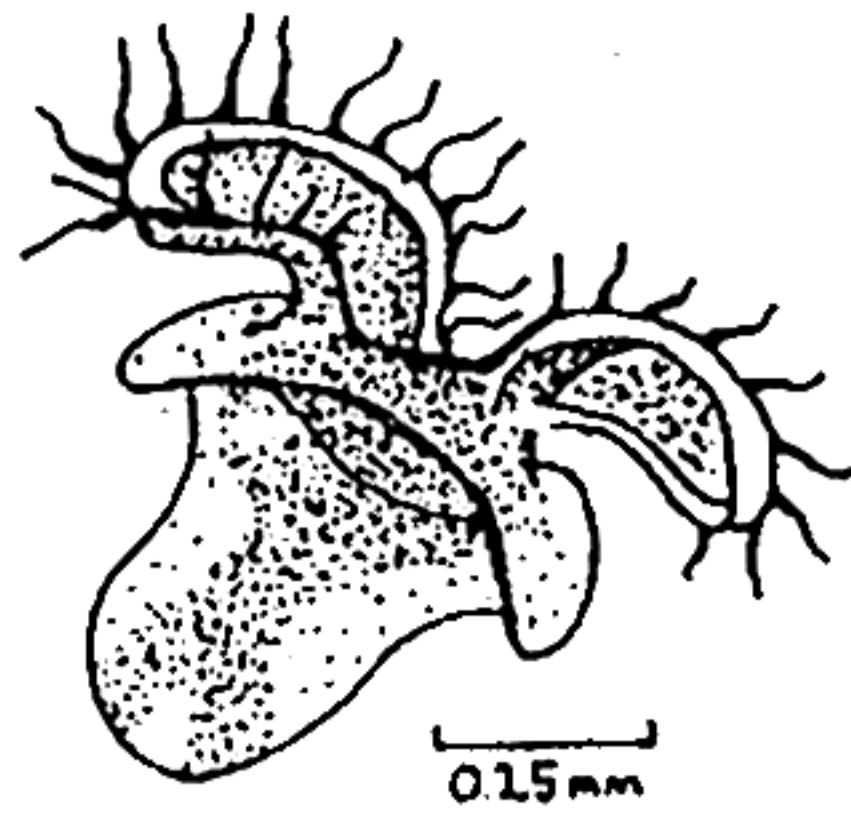
Chiton egg



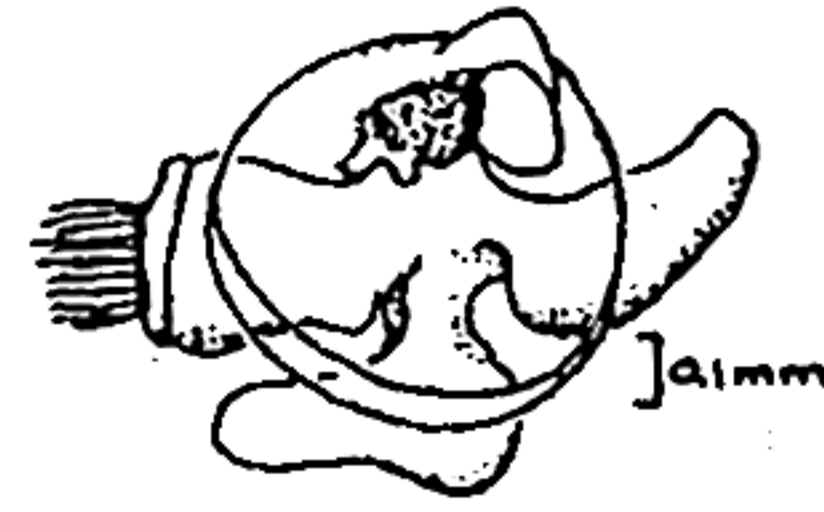
Littorina egg case



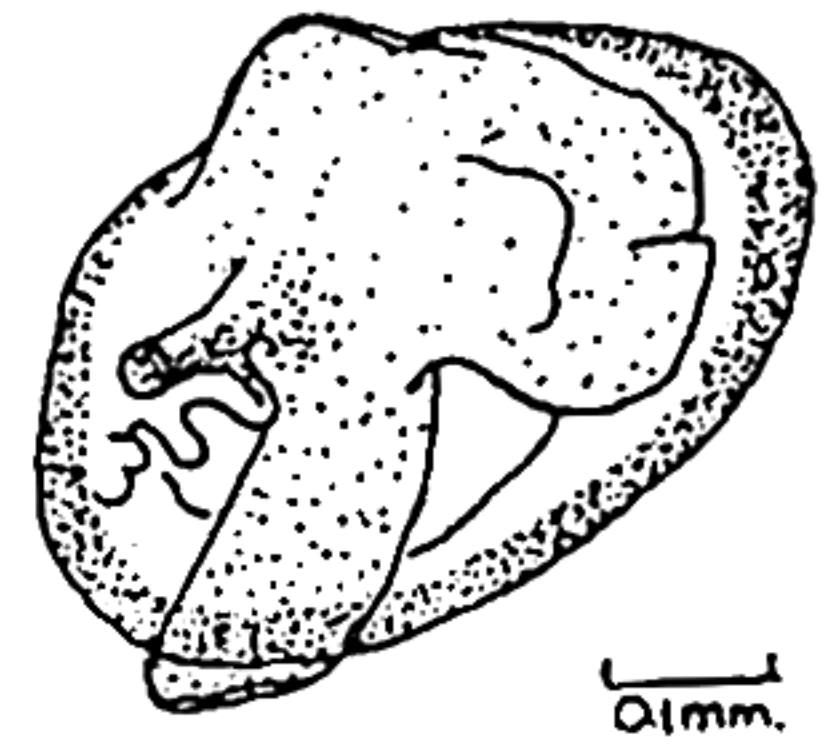
Gastropod veliger larva



Pediveliger of a bivalve

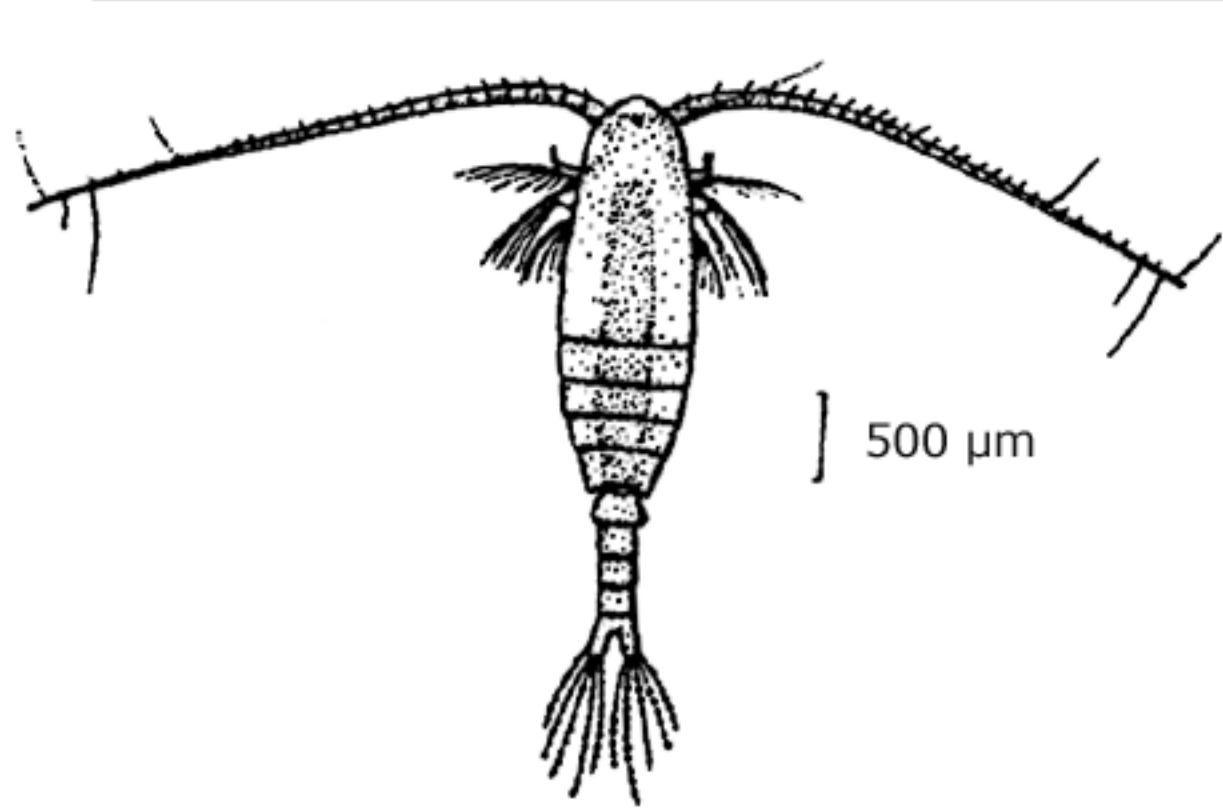


Juvenile bivalve

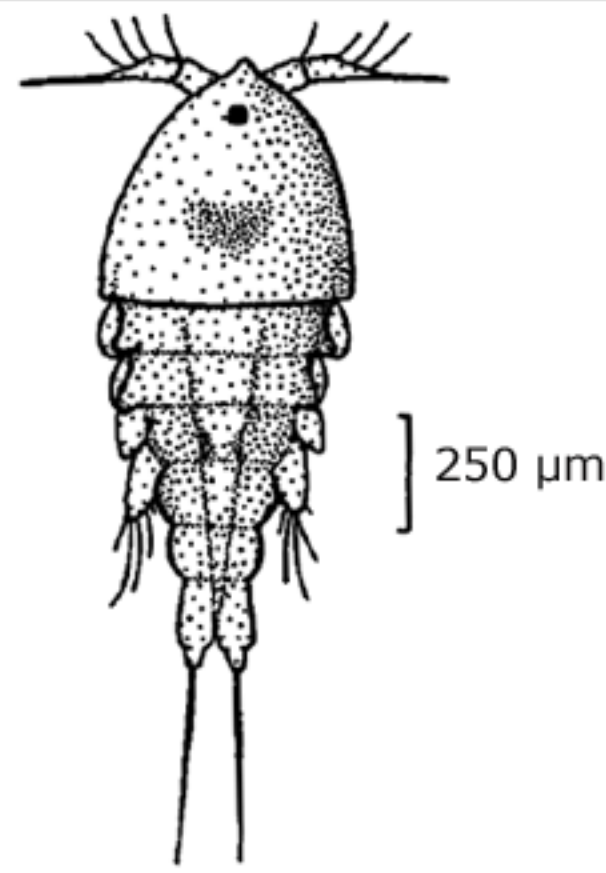


Phylum Arthropoda Class Crustacea

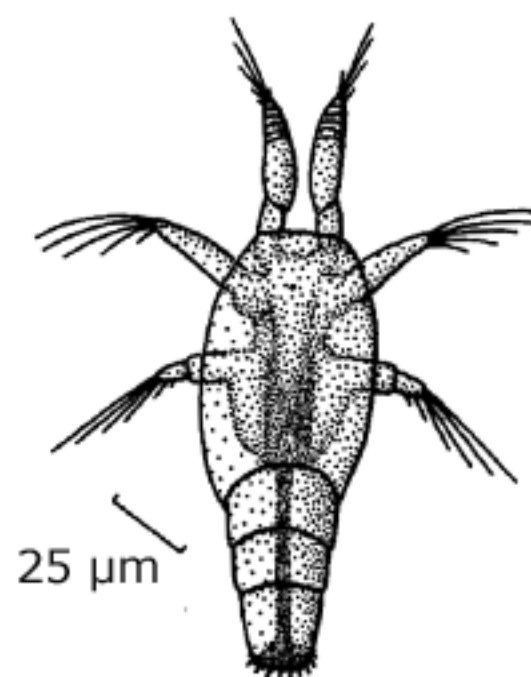
Copepods



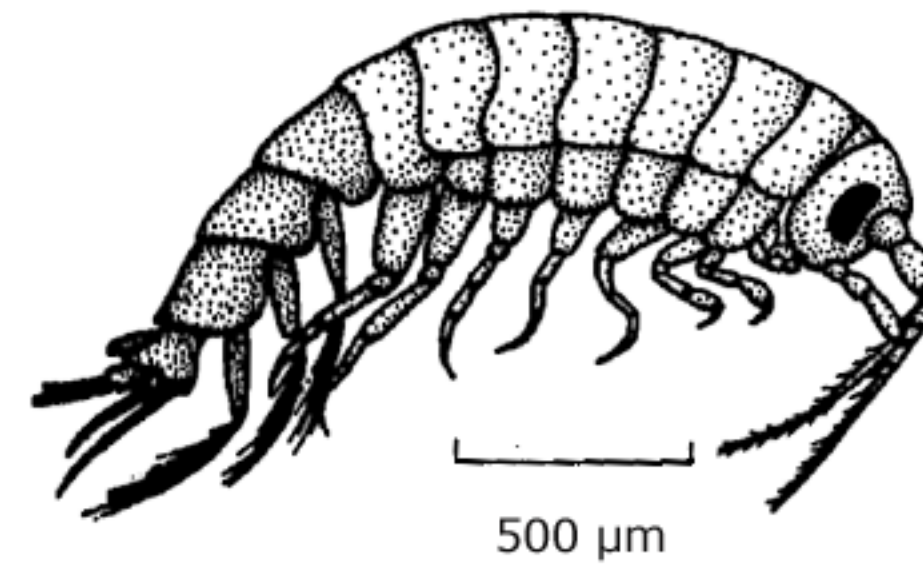
Calanoid



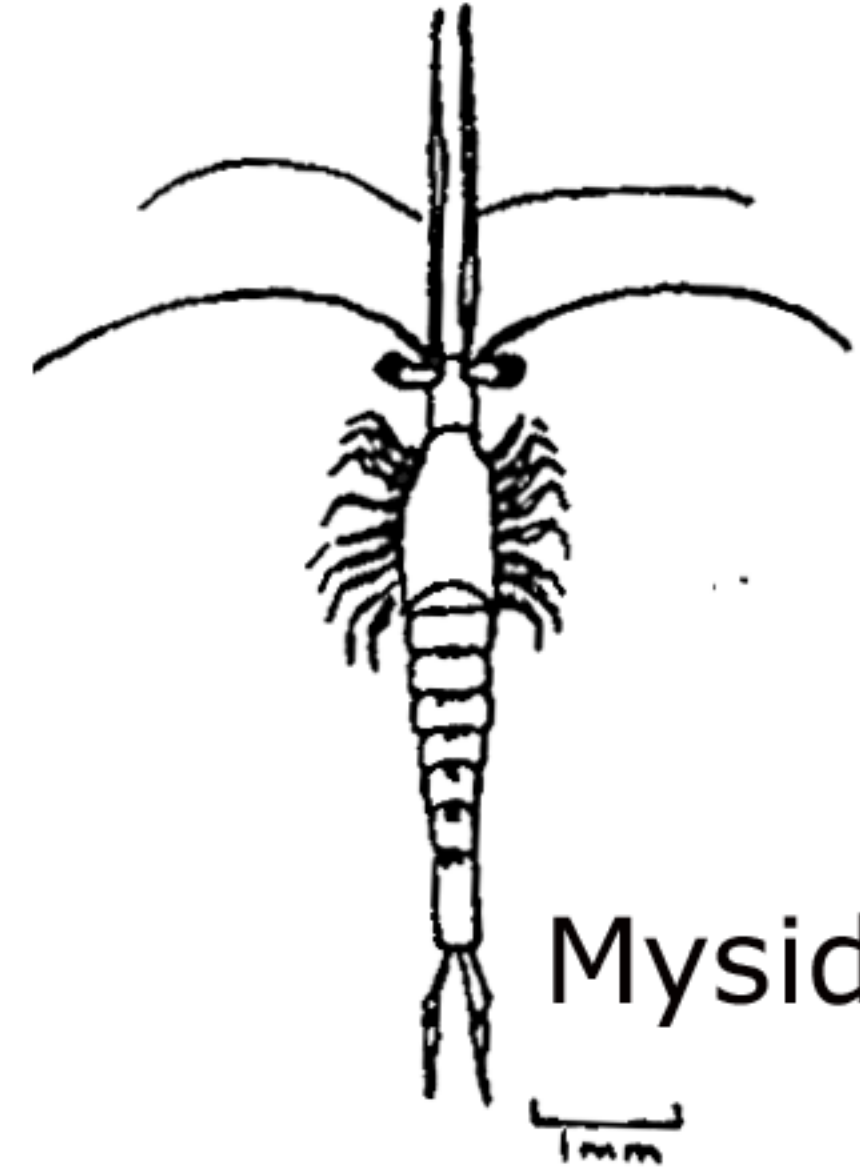
Harpacticoid



Nauplius
(larval stage)



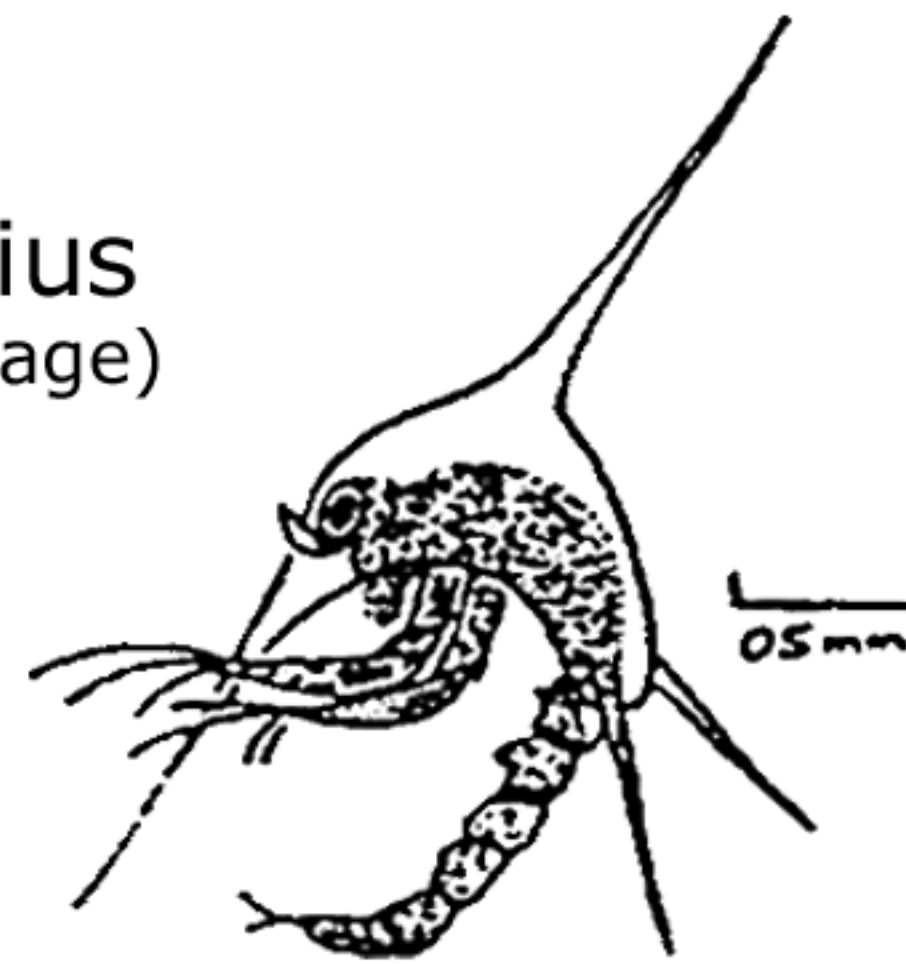
Amphipod



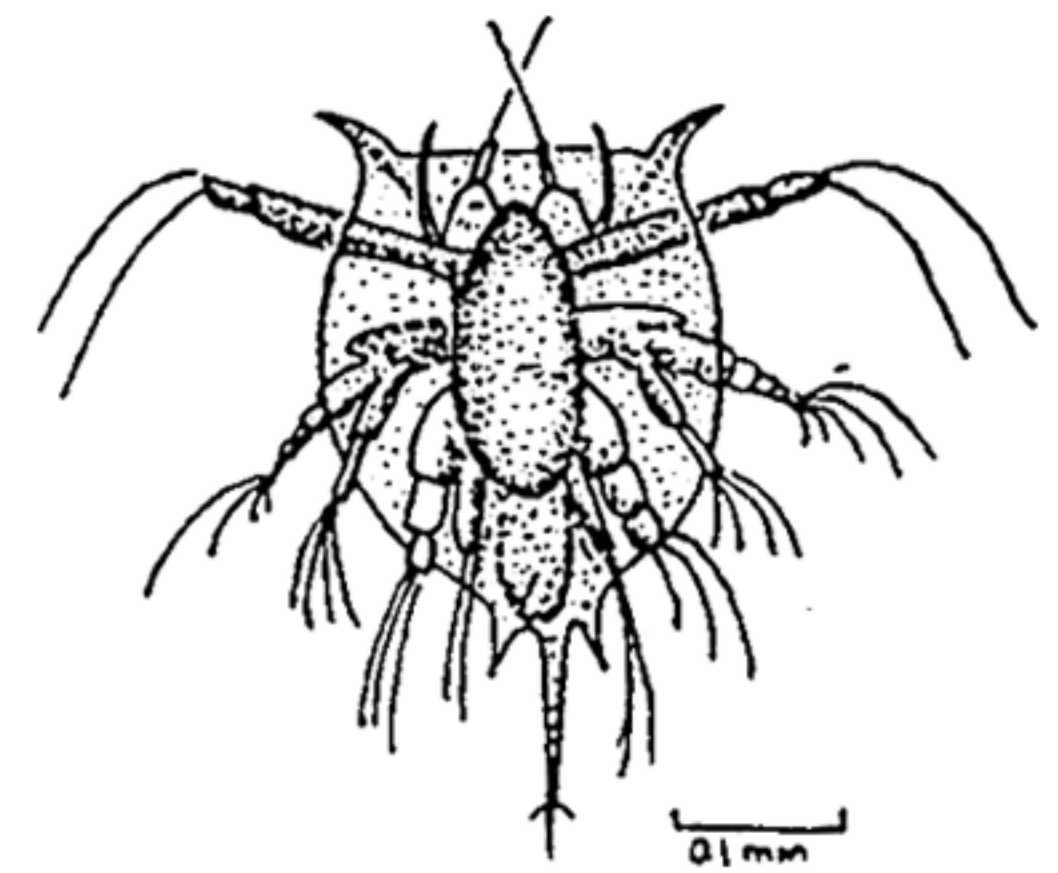
Mysid



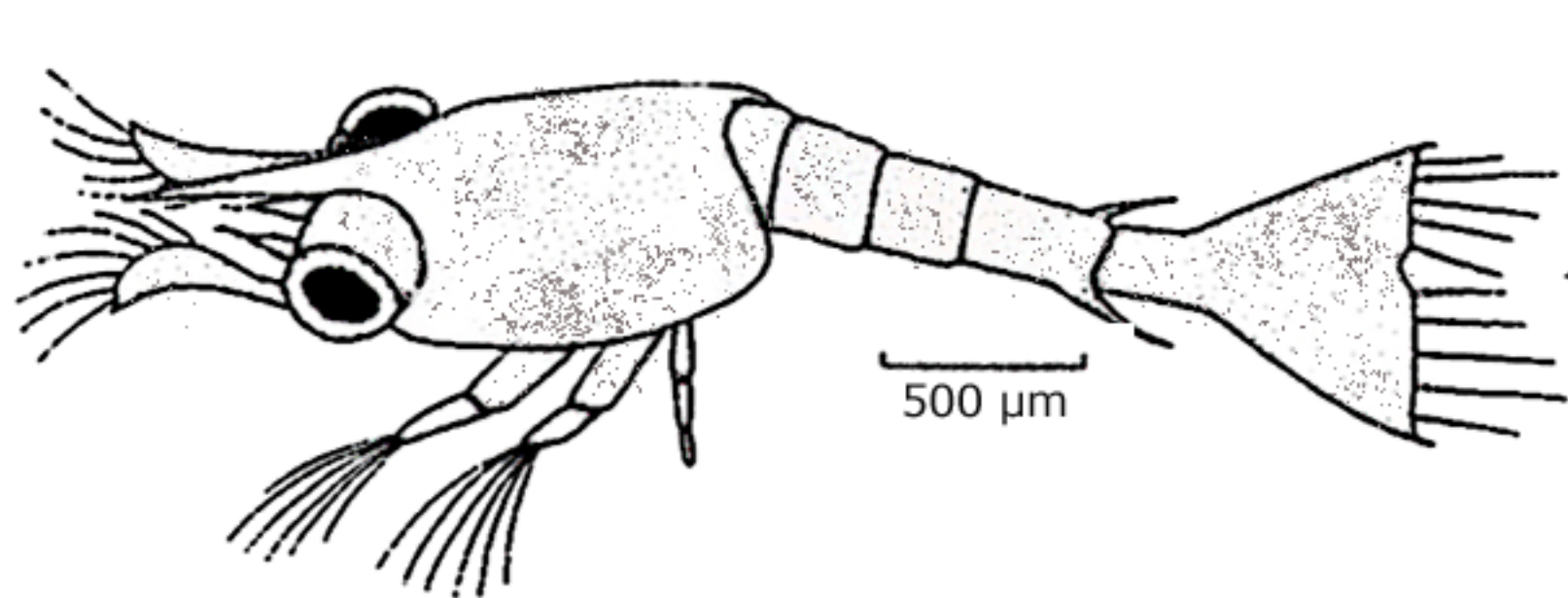
Zoea larva of porcellanid crab



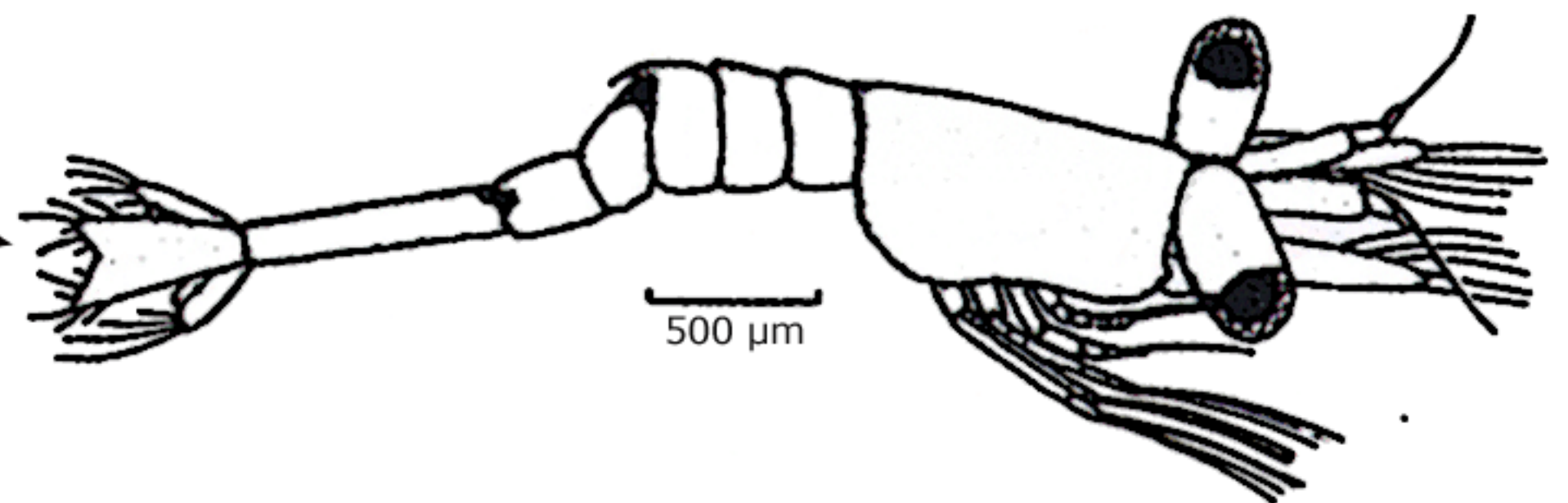
Zoea larva of
brachyuran crab



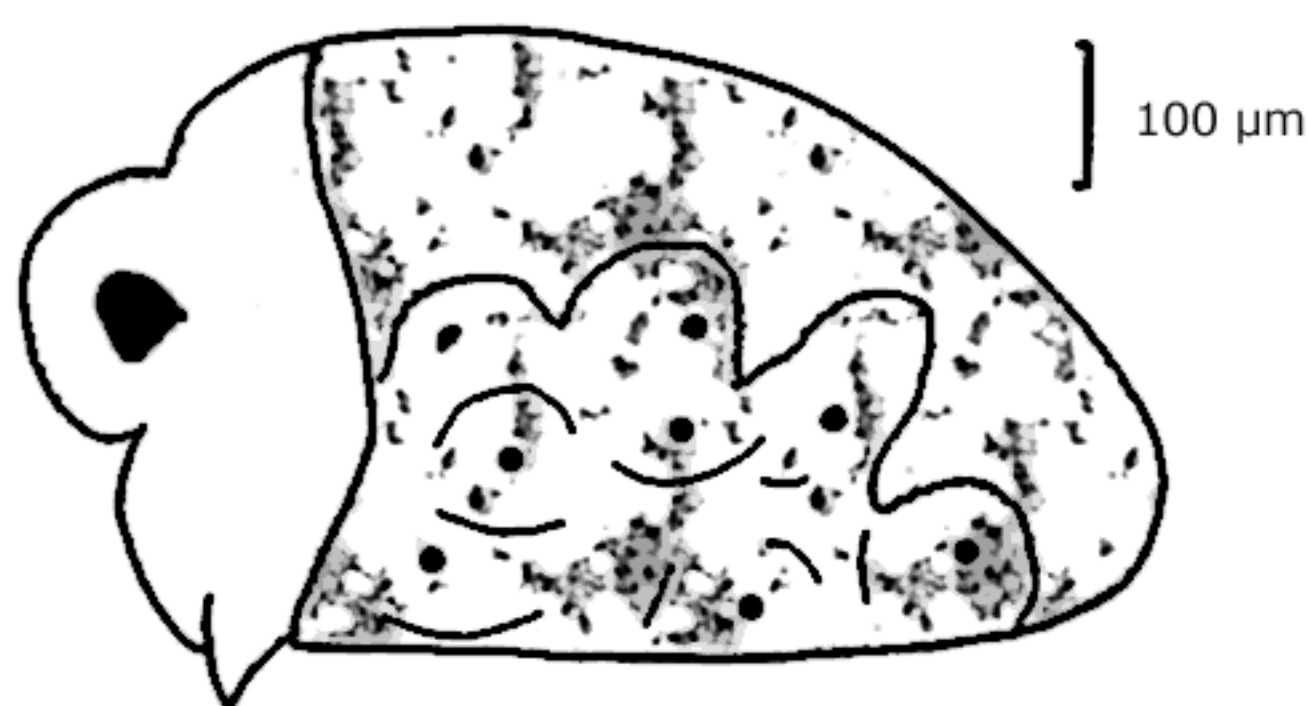
Nauplius of Barnacle



Pagurus (hermit crab) larval stage



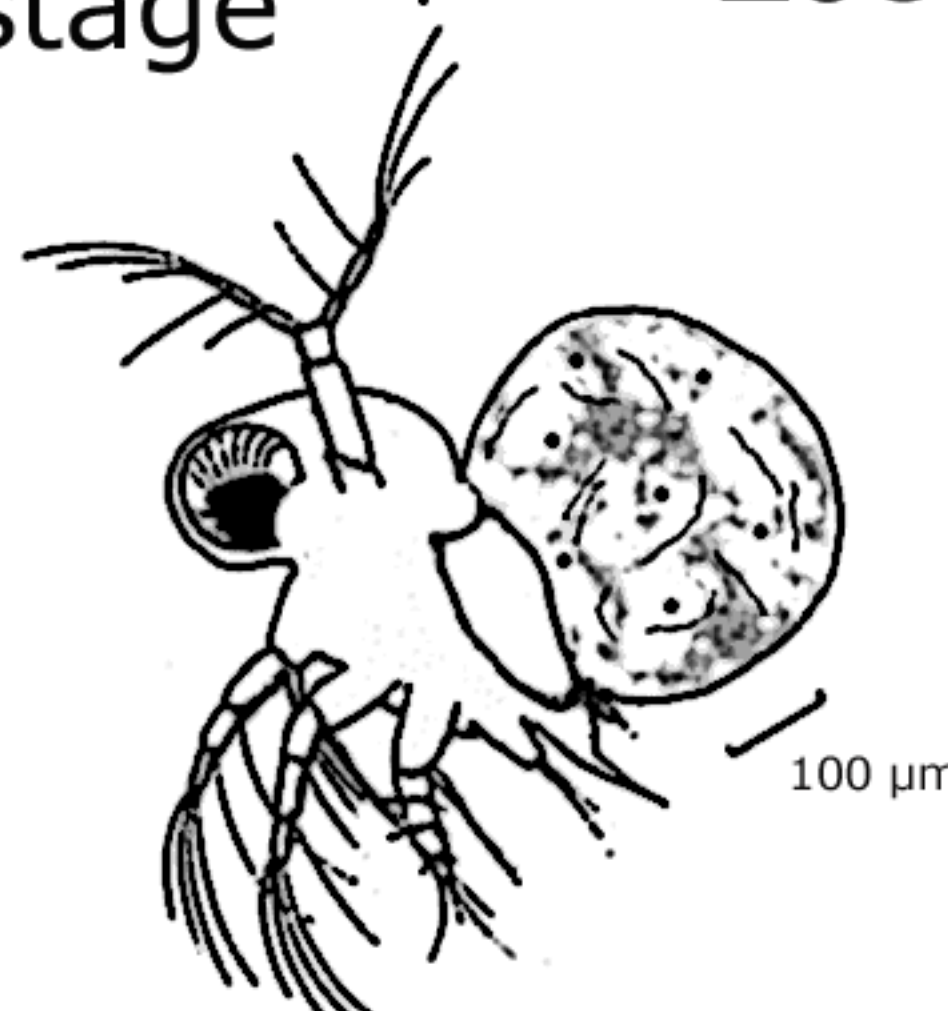
Zoea larva of caridean shrimp



Evadne

(cladoceran water flea)

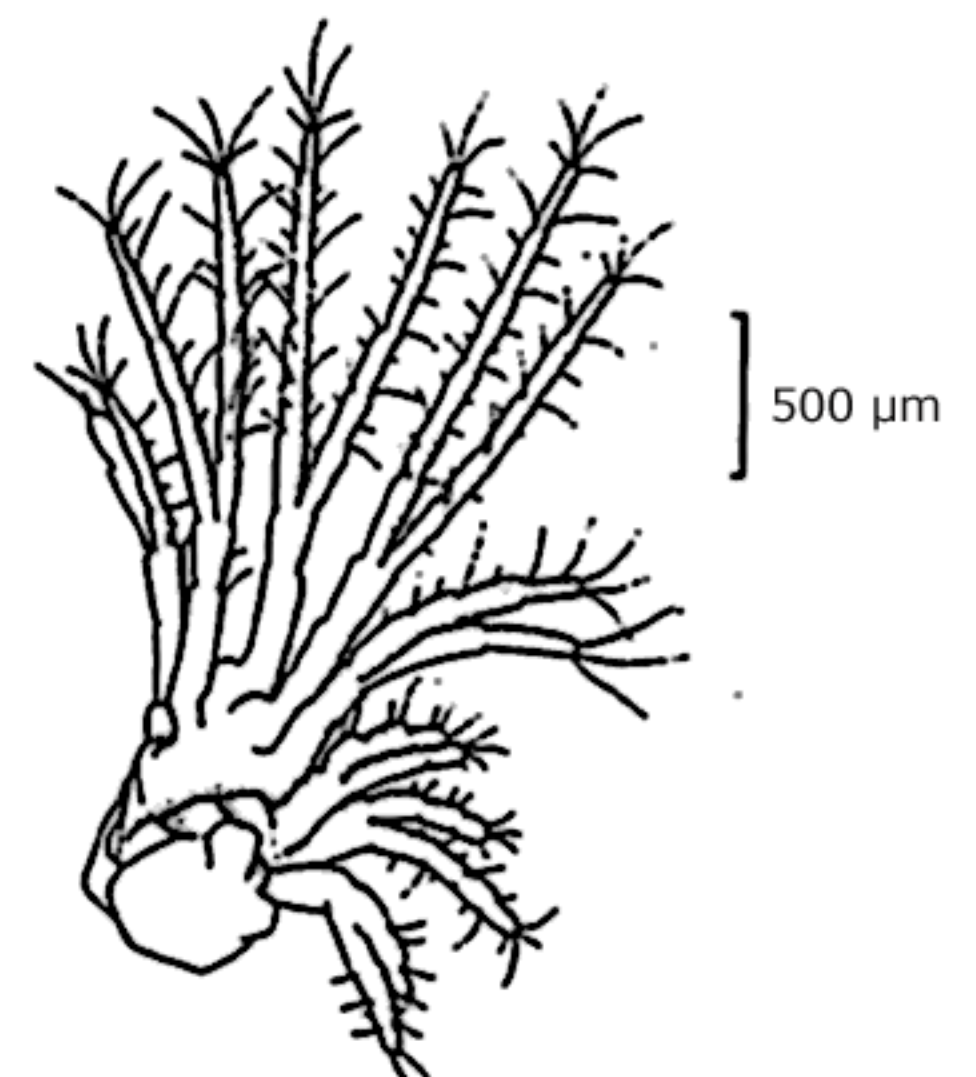
~The little black dots inside are babies
(ie. gravid)~



Podon

(cladoceran water flea)

~Also gravid (with eggs)~



Molt of adult
barnacle exoskeleton